



PATMaths

TEST BOOKLET 3

DIRECTIONS

This is a test of your understanding and skill in mathematics. Each question in the test has four or five answers given. Carefully read each sentence and then mark your answer on the Answer Sheet before you go on to the next question.

PRACTICE QUESTIONS

P1 Which number is one less than 8?

- A** 6
- B** 7
- C** 8
- D** 9
- E** 10

P2 Which one of these shapes is a triangle?



- A**
- B**
- C**
- D**

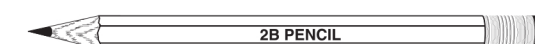
The correct answer to **P1** is **B**.

The correct answer to **P2** is **A**.

- You will have 40 minutes to complete the test.
- You may re-read a question as many times as you need.
- Your teacher will tell you whether you may use a calculator during the test. You may not use a calculator for the last 4 questions (Questions 32 to 35).
- Remember that you mark only the **one** best answer for each question.
- If you want to change your answer, rub out your first mark completely, then create another mark to show your new answer.

INSTRUCTIONS FOR THE ANSWER SHEET

Use pencil only, preferably 2B.

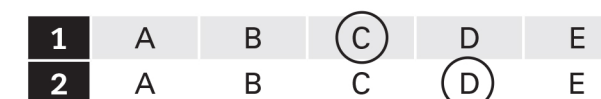


Start by filling in the information at the top of the Answer Sheet. Your teacher will help you with this.

If using the OMR Answer Sheet, mark your answers like this:



If using the Non-OMR Answer Sheet, mark your answers like this:



Try each question as you come to it. Work as quickly and carefully as you can. Do not spend too long on one question, even if it is hard. Follow the question numbers down the columns on your Answer Sheet.

Do not write on the Test Booklet. Use some spare paper if you want to make notes.

DO NOT TURN THE PAGE UNTIL YOU ARE TOLD TO DO SO